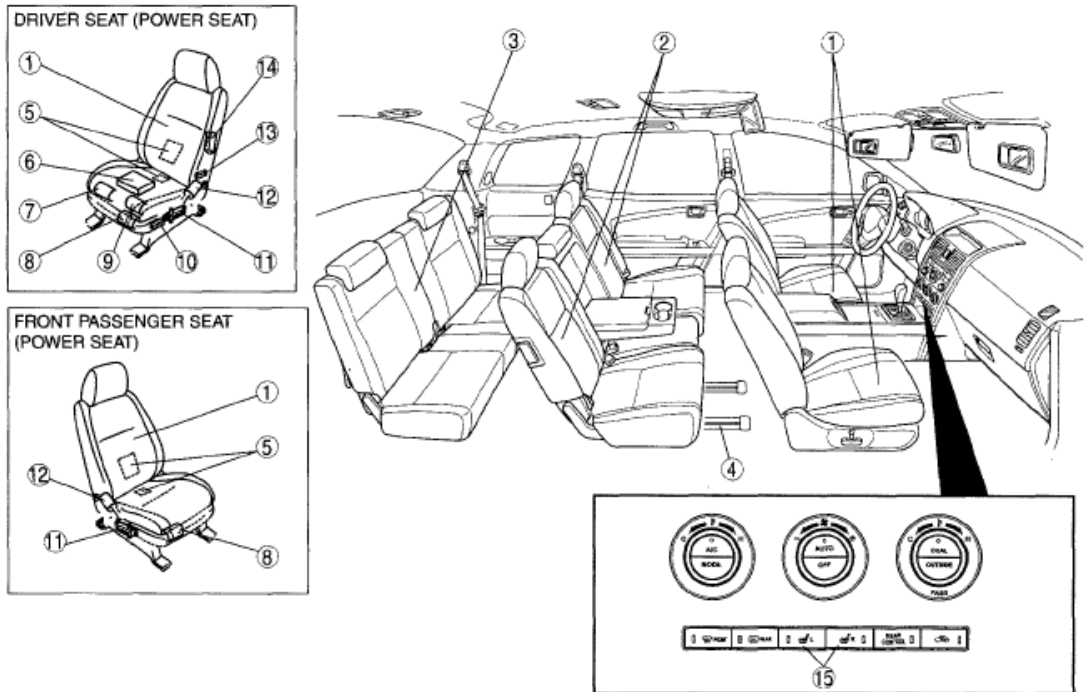


2008 BODY & ACCESSORIES

Seats - Mazda CX-9

SEAT LOCATION INDEX



ac9luw00001130

1	Front seat (See 09-13-3 FRONT SEAT REMOVAL/ INSTALLATION.) (See 09-13-3 FRONT SEAT DISASSEMBLY/ ASSEMBLY.)
2	Second-row seat (See 09-13-19 SECOND-ROW SEAT REMOVAL/ INSTALLATION.) (See 09-13-20 SECOND-ROW SEAT DISASSEMBLY/ASSEMBLY.)
3	Third-row seat (See 09-13-22 THIRD-ROW SEAT REMOVAL/ INSTALLATION.) (See 09-13-23 THIRD-ROW SEAT DISASSEMBLY/ ASSEMBLY.)
4	Long slider (See 09-13-22 LONG SLIDER REMOVAL/ INSTALLATION.)
5	Seat warmer unit (See 09-13-18 SEAT WARMER UNIT INSPECTION.)
6	Position memory control module (See 09-13-14 POSITION MEMORY CONTROL MODULE REMOVAL/INSTALLATION.) (See 09-13-15 POSITION MEMORY CONTROL MODULE INSPECTION.)

7	Rear tilt motor (See 09-13-10 REAR TILT MOTOR INSPECTION.)
8	Slide motor (See 09-13-10 SLIDE MOTOR INSPECTION.)
9	Front tilt motor (See 09-13-10 FRONT TILT MOTOR INSPECTION.)
10	Position memory switch (See 09-13-17 POSITION MEMORY SWITCH INSPECTION.)
11	Power seat switch (See 09-13-12 POWER SEAT SWITCH INSPECTION.)
12	Recliner motor (See 09-13-11 RECLINER MOTOR INSPECTION.)
13	Rumbler support switch (See 09-13-11 LUMBAR SUPPORT SWITCH INSPECTION.)
14	Rumbar support motor (See 09-13-11 LUMBAR SUPPORT MOTOR INSPECTION.)
15	Seat warmer switch (See 07-40-23 FRONT CLIMATE CONTROL UNIT REMOVAL/INSTALLATION.) (See 07-40-23 FRONT CLIMATE CONTROL UNIT INSPECTION.)

Fig. 1: Identifying Seat Components Location

Courtesy of MAZDA MOTORS CORP.

FRONT SEAT REMOVAL/INSTALLATION

WARNING:

- Handling the front seat (with a side air bag) improperly can accidentally deploy the air bag, which may seriously injure you. Read the service warnings and cautions before handling the front seat (with a side air bag). (See AIR BAG SYSTEM SERVICE WARNINGS .) (See AIR BAG SYSTEM SERVICE CAUTIONS .)

1. Turn the ignition switch to the LOCK position.
2. Disconnect the negative battery cable and wait **1 min or more**.
3. Press connector tab A in the direction of the arrow.

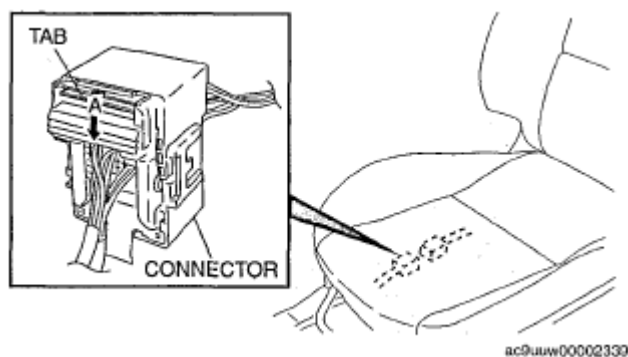


Fig. 2: Pressing Connector Tab
Courtesy of MAZDA MOTORS CORP.

4. Pull out the connector lock in the direction of the arrow and disconnect the connector.

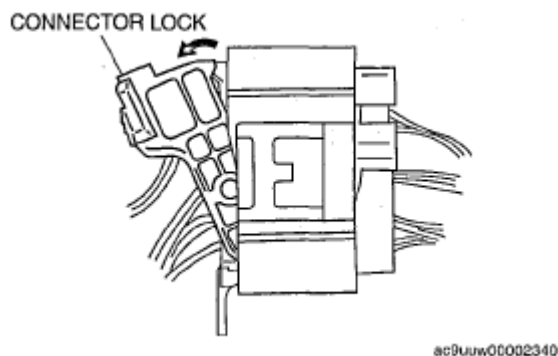


Fig. 3: Pulling Out Connector Lock
Courtesy of MAZDA MOTORS CORP.

5. Remove in the order indicated in the table.
6. Install in the reverse order of removal.

2008 Mazda CX-9 Grand Touring

2008 BODY & ACCESSORIES Seats - Mazda CX-9

1	Bolt
2	Connector
3	Front seat



BOLT: 38.2—55.86 N·m
{3.90—5.68, kgf·m,
28.2—41.1ft·lb}

ac9uuw00000741

Fig. 4: Identifying Front Seat Connector & Torque Specifications
Courtesy of MAZDA MOTORS CORP.

FRONT SEAT DISASSEMBLY/ASSEMBLY

WARNING:

- Handling the front seat (with a side air bag) improperly can accidentally deploy the air bag, which may seriously injure you. Read the service warnings and cautions before handling the front seat (with a side air bag). (See AIR BAG SYSTEM SERVICE WARNINGS .) (See AIR BAG SYSTEM SERVICE CAUTIONS .)

CAUTION:

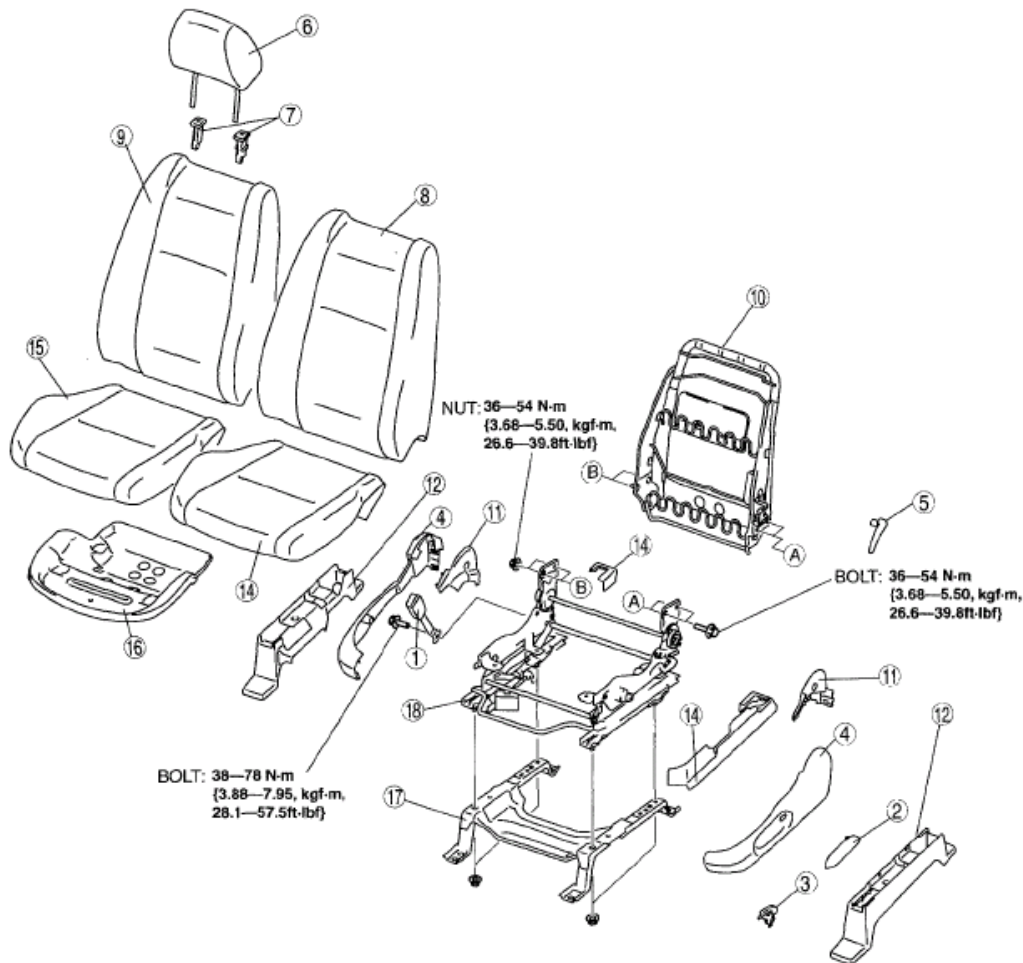
- If any of the following work is performed, perform the seat weight sensor calibration using the M-MDS. (See SEAT WEIGHT SENSOR CALIBRATION .)
 - Replacement with a new seat weight sensor
 - Replacement with a new seat weight sensor control module
 - Replacement with new passenger-side seat parts
 - Disassembly of the passenger-side seat
- If any of the following work is performed, perform the seat weight sensor inspection using the M-MDS. (See SEAT WEIGHT SENSOR INSPECTION .)
 - Removal of the passenger-side seat
 - Loosening and retightening of passenger's seat fixing bolts

1. Disconnect the negative battery cable and wait for **more than 1 minute**.
2. Remove the side air bag module. (See SIDE AIR BAG MODULE REMOVAL/INSTALLATION .)
3. Disassemble in the order indicated in the table.
4. Assemble in the reverse order of disassembly.

DRIVER SEAT (MANUAL SEAT)

2008 Mazda CX-9 Grand Touring

2008 BODY & ACCESSORIES Seats - Mazda CX-9



ac9uuw0000803

1	Front buckle
2	Recliner lever
3	Lift lever
4	Side cover (See 09-13-8 Side cover disassembly note.)
5	Lumbar support lever (See 09-13-8 Seat back pad disassembly note.)
6	Headrest
7	Pole guide
8	Seat back trim

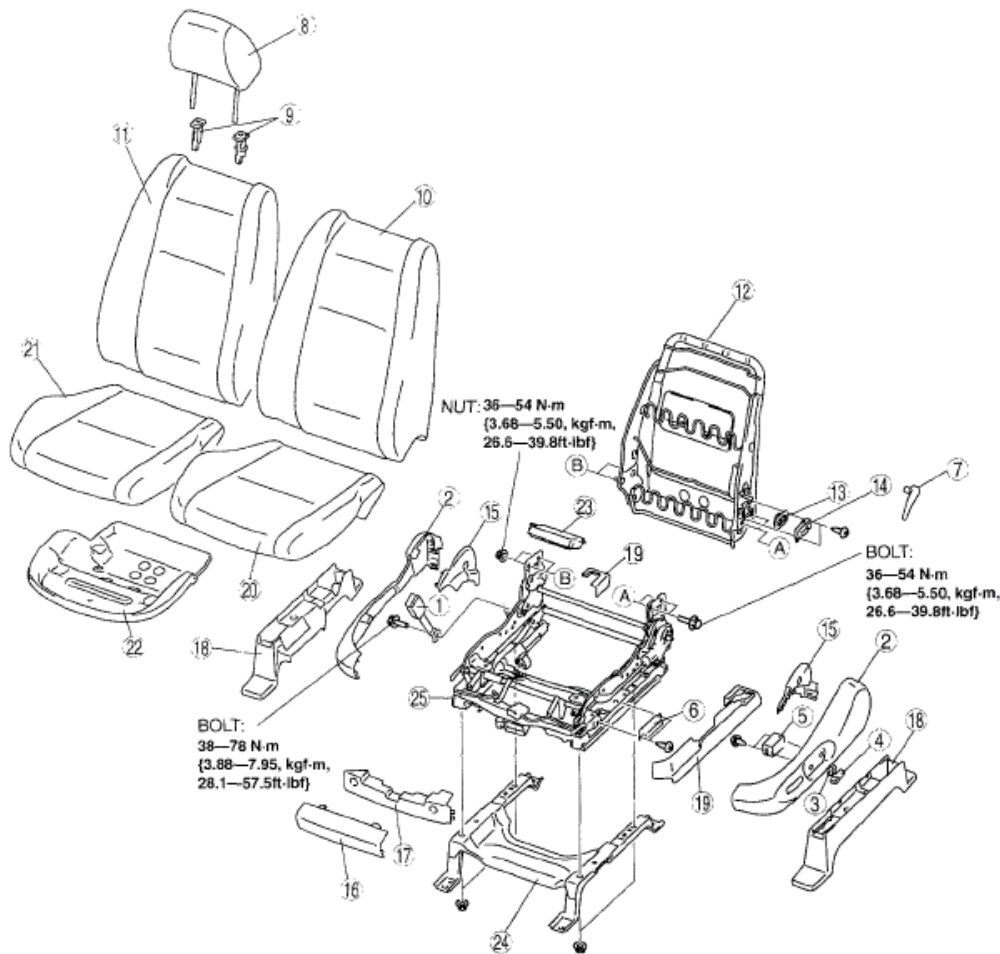
9	Seat back pad (See 09-13-8 Side cover disassembly note.)
10	Seat back frame
11	Reverse cover
12	Seat under braket cover
13	Slide adjuster cover
14	Seat cushion trim
15	Seat cushion pad
16	Seat cushion frame
17	Seat under braket
18	Slide adjuster

Fig. 5: Exploded View Of Front Seat - Driver Seat (Manual Seat) & Torque Specifications
 Courtesy of MAZDA MOTORS CORP.

DRIVER SEAT (POWER SEAT)

2008 Mazda CX-9 Grand Touring

2008 BODY & ACCESSORIES Seats - Mazda CX-9



ac9suw0000804

1	Front buckle
2	Side cover (See 09-13-8 Side cover disassembly note.)
3	Recliner switch knob
4	Slider and lifter switch knob
5	Power seat switch
6	Memory switch (vehicles with position memory seat)
7	Lumbar support lever (vehicles without power lumbar support seat) (See 09-13-8 Seat back pad disassembly note.)
8	Headrest
9	Pole guide
10	Seat back trim
11	Seat back pad (See 09-13-8 Side cover disassembly note.)
12	Seat back frame

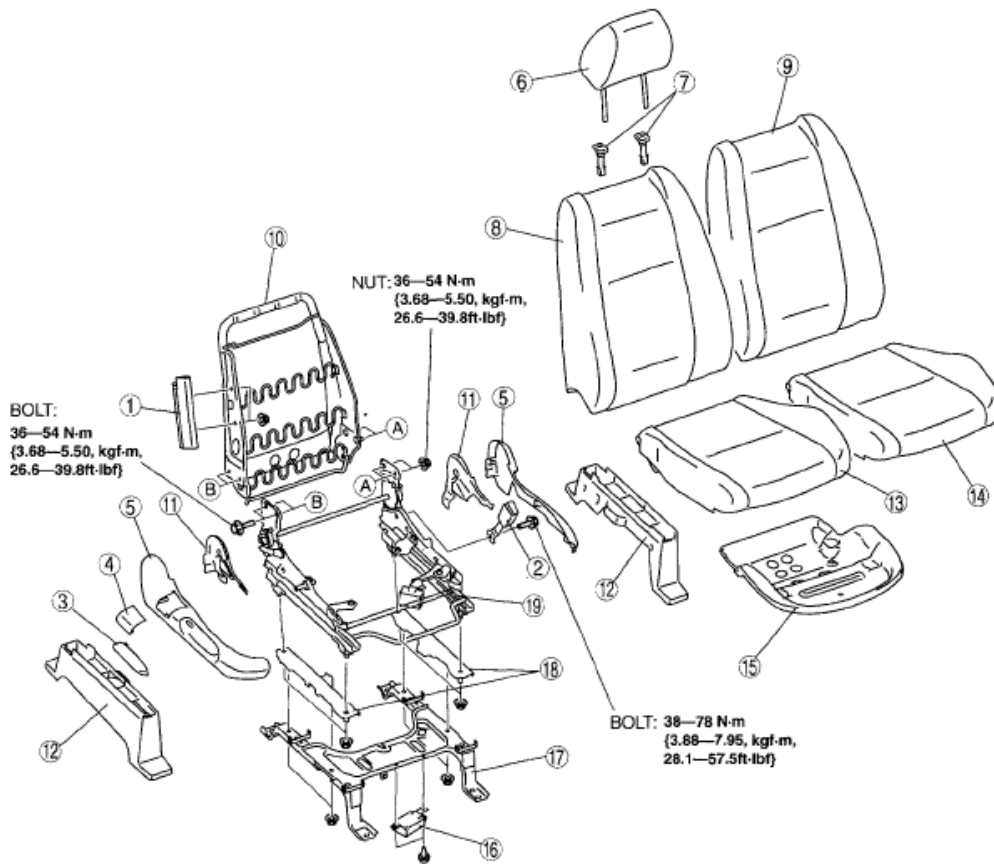
13	Lumbar support switch cover (vehicles with power lumbar support seat)
14	Lumbar support switch (vehicles with power lumbar support seat)
15	Reverse cover
16	Front cover No.1
17	Front cover No.2
18	Seat under bracket cover
19	Slide adjuster cover
20	Seat cushion trim
21	Seat cushion pad
22	Seat cushion frame
23	Position memory control module (vehicles with position memory seat)
24	Seat under bracket
25	Slide adjuster

Fig. 6: Exploded View Of Front Seat - Driver Seat (Power Seat) & Torque Specifications
Courtesy of MAZDA MOTORS CORP.

PASSENGER SEAT (MANUAL SEAT)

2008 Mazda CX-9 Grand Touring

2008 BODY & ACCESSORIES Seats - Mazda CX-9



ac9uuw0000805

1	Side air bag module (See 08-10-8 SIDE AIR BAG MODULE REMOVAL/ INSTALLATION.)
2	Front buckle
3	Recliner lever
4	Ancor cover
5	Side cover (See 09-13-8 Side cover disassembly note.)
6	Headrest
7	Pole guide
8	Seat back trim
9	Seat back pad (See 09-13-8 Side cover disassembly note.)

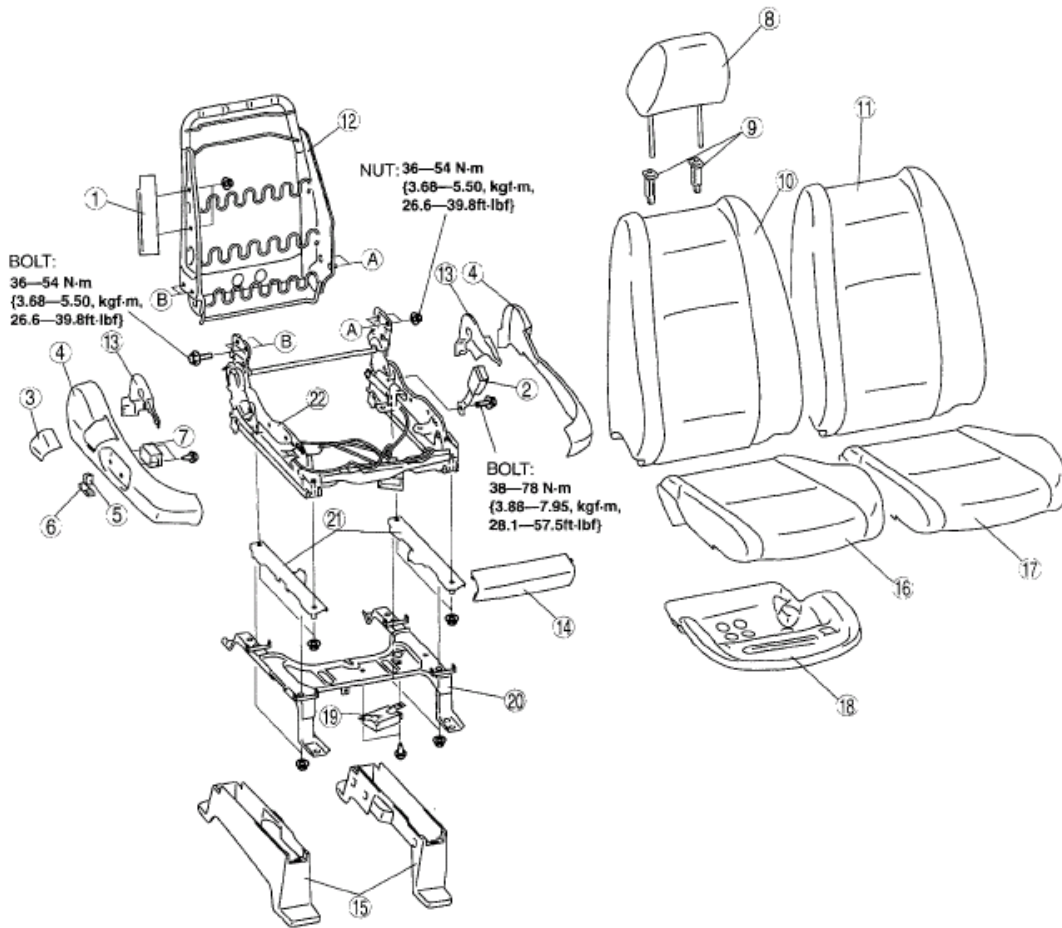
10	Seat back frame
11	Reverse cover
12	Seat under braket cover
13	Seat cushion trim
14	Seat cushion pad
15	Seat cushion frame
16	Seat weight sensor control module
17	Seat under braket
18	Seat weight sensor (See 09-13-9 Lumber support lever disassembly note.)
19	Slide adjuster

Fig. 7: Exploded View Of Front Seat - Passenger Seat (Manual Seat) & Torque Specifications
 Courtesy of MAZDA MOTORS CORP.

PASSENGER SEAT (POWER SEAT)

2008 Mazda CX-9 Grand Touring

2008 BODY & ACCESSORIES Seats - Mazda CX-9



ac9uuw0000806

1	Side air bag module (See 08-10-8 SIDE AIR BAG MODULE REMOVAL/ INSTALLATION.)
2	Front buckle
3	Ancor cover
4	Side cover (See 09-13-8 Side cover disassembly note.)
5	Recliner switch knob
6	Slider and lifter switch knob
7	Power seat switch
8	Headrest
9	Pole guide
10	Seat back trim

11	Seat back pad (See 09-13-8 Side cover disassembly note.)
12	Seat back frame
13	Reverse cover
14	Front cover
15	Seat under braket cover
16	Seat cushion trim
17	Seat cushion pad
18	Seat cushion frame
19	Seat weight sensor control module
20	Seat under braket
21	Seat weight sensor
22	Slide adjuster

Fig. 8: Exploded View Of Front Seat - Passenger Seat (Power Seat) & Torque Specifications
 Courtesy of MAZDA MOTORS CORP.

SIDE COVER DISASSEMBLY NOTE

1. Pull the side cover outward and remove clip A.
2. Pull the side cover rearward and up at an angle, and remove tabs B and C.

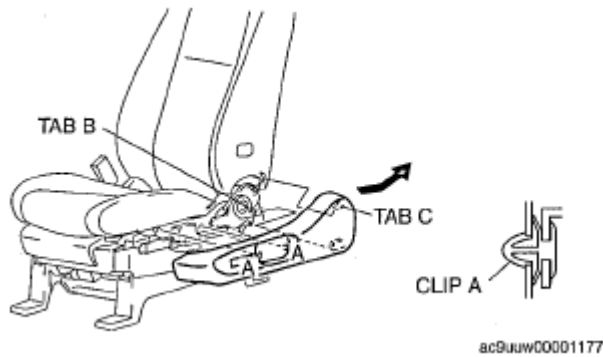


Fig. 9: Pulling Side Cover
 Courtesy of MAZDA MOTORS CORP.

SEAT BACK PAD DISASSEMBLY NOTE

1. Remove the headrest.
2. Slide hook A upward and remove it from hook B.
3. Open the fastener.

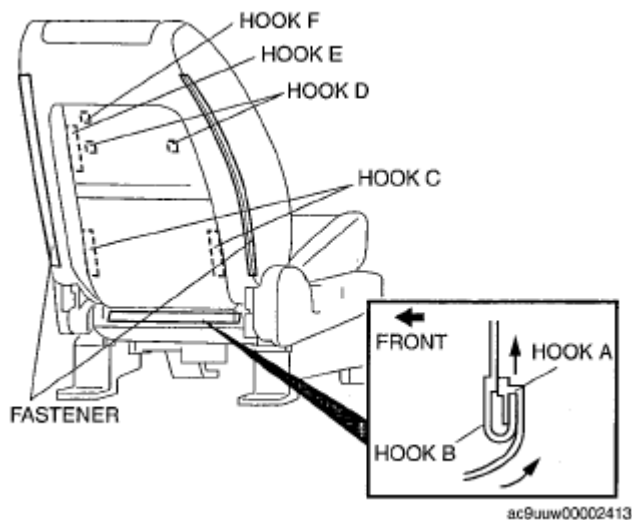
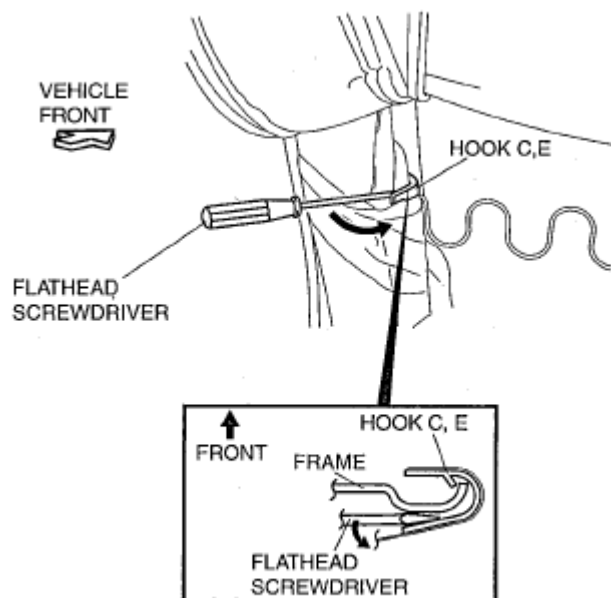


Fig. 10: Identifying Fastener And Hook
 Courtesy of MAZDA MOTORS CORP.

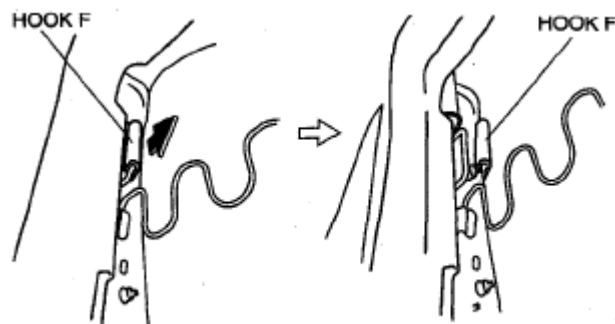
4. Insert a flathead screwdriver between hook C and the frame.
5. Pull the flathead screwdriver in the direction of the arrow as shown in the figure.
6. Remove the hook C.
7. Remove the hook D.
8. Remove the hook E.



ac9uuw00002432

Fig. 11: Inserting Flathead Screwdriver Between Hook And Frame
 Courtesy of MAZDA MOTORS CORP.

9. Remove the hook F.
10. Remove the pole guide.
11. Remove the C ring
12. Remove the seat back trim.
13. Remove the seat back pad.

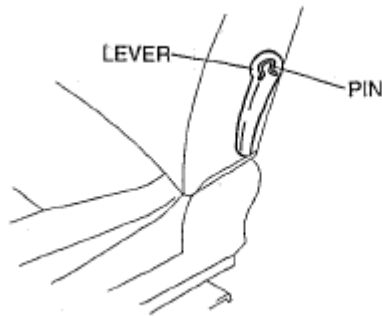


ac9uuw00002412

Fig. 12: Removing Hook
 Courtesy of MAZDA MOTORS CORP.

LUMBER SUPPORT LEVER DISASSEMBLY NOTE

1. Remove the pin from the lumber support lever installation part with rag.

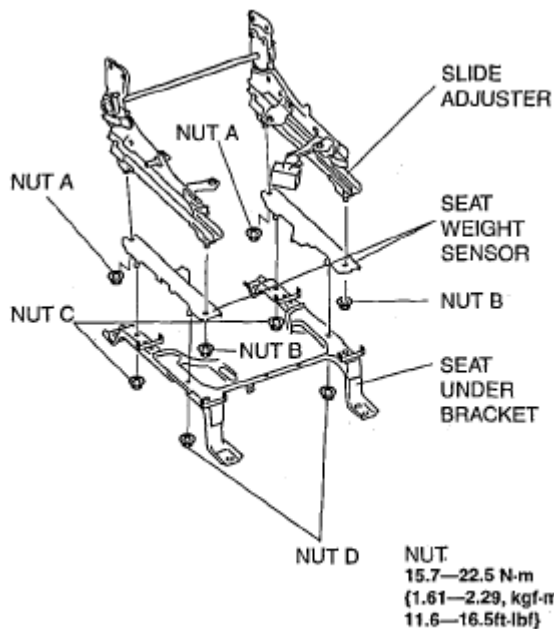


am6uuw000007

Fig. 13: Identifying Lumber Support Lever & Pin
 Courtesy of MAZDA MOTORS CORP.

SEAT WEIGHT SENSOR INSTALLATION NOTE

1. Install the seat weight sensor to the slide adjusters and temporarily tighten the four nuts.
2. Tighten nuts A (both right and left) at the same time to the specified tightening torque.
3. Tighten nuts B (both right and left) at the same time to the specified tightening torque.
4. Install the seat under bracket to the seat weight sensor and temporarily tighten the four nuts.
5. Tighten nuts C (both right and left) at the same time to the specified tightening torque.
6. Tighten nuts D (both right and left) at the same time to the specified tightening torque.



ac9uuw00001161

Fig. 14: Identifying Seat Under Bracket, Seat Weight Sensor & Torque Specifications
 Courtesy of MAZDA MOTORS CORP.

FRONT TILT MOTOR INSPECTION

1. Disconnect the front tilt motor connector.
2. Apply battery positive voltage to the front tilt motor terminals and inspect the front tilt motor operation
 - If not as specified, replace the slide adjuster.

MOTOR OPERATION

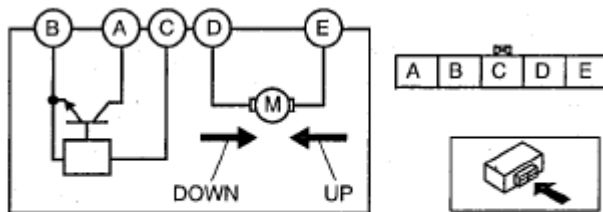
Motor operation	Connection	
	B+	GND
Up	E	D
Down	D	E

3. Connect the front tilt motor connector.
4. Measure the front tilt motor terminal A waveform during motor operation using the oscilloscope.

VOLTAGE SPECIFICATION

Condition	Voltage (V)
High output	4.8 or more
Low output	1.0 or less

- If not as specified, replace the slide adjuster.



ac9uuw0001470

Fig. 15: Front Tilt Motor - Circuit Diagram
 Courtesy of MAZDA MOTORS CORP.

REAR TILT MOTOR INSPECTION

1. Disconnect the rear tilt motor connector.
2. Apply battery positive voltage to the rear tilt motor terminals and inspect the rear tilt motor operation
 - If not as specified, replace the slide adjuster.

MOTOR OPERATION

Motor operation	Connection	
	B+	GND

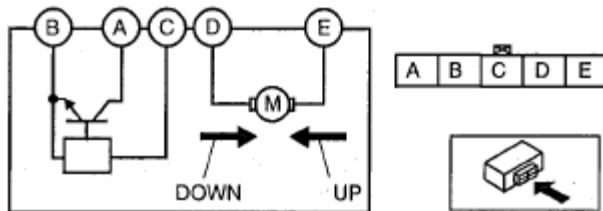
Up	E	D
Down	D	E

3. Connect the rear tilt motor connector.
4. Measure the rear tilt motor terminal A waveform during motor operation using the oscilloscope.

VOLTAGE SPECIFICATION

Condition	Voltage (V)
High output	4.8 or more
Low output	1.0 or less

- If not as specified, replace the slide adjuster.



ac9uuw00001474

Fig. 16: Rear Tilt Motor - Circuit Diagram
 Courtesy of MAZDA MOTORS CORP.

SLIDE MOTOR INSPECTION

1. Disconnect the slid motor connector.
2. Apply battery positive voltage to the slide motor terminals and inspect the slide motor operation
 - If not as specified, replace the slide adjuster.

MOTOR OPERATION

Motor operation	Connection	
	B+	GND
Forward	2B	2A
Backward	2A	2B

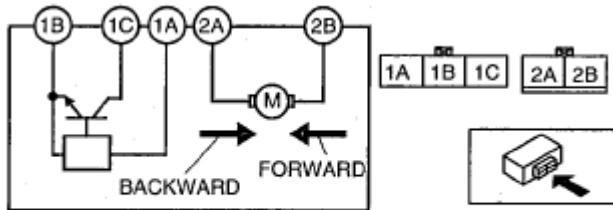
3. Connect the slide motor connector.
4. Measure the slide motor terminal 1C waveform during motor operation using the oscilloscope.

VOLTAGE SPECIFICATION

Condition	Voltage (V)
High output	4.8 or more

Low output | 1.0 or less

- If not as specified, replace the slide adjuster.



ac9uuw00001191

Fig. 17: Slide Motor - Circuit Diagram
Courtesy of MAZDA MOTORS CORP.

RECLINER MOTOR INSPECTION

1. Disconnect the recliner motor connector.
2. Apply battery positive voltage to the recliner motor terminals and inspect the recliner motor operation
 - If not as specified, replace the slide adjuster.

MOTOR OPERATION

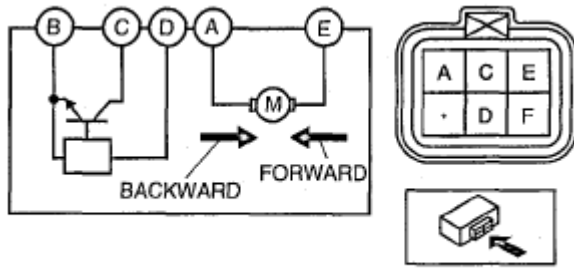
Motor operation	Connection	
	B+	GND
Forward	E	A
Backward	A	E

3. Connect the recliner motor connector.
4. Measure the recliner motor terminal C waveform during motor operation using the oscilloscope.

VOLTAGE SPECIFICATION

Condition	Voltage (V)
High output	4.8 or more
Low output	1.0 or less

- If not as specified, replace the slide adjuster.



ac9uuw00001475

Fig. 18: Recliner Motor - Circuit Diagram
 Courtesy of MAZDA MOTORS CORP.

LUMBAR SUPPORT SWITCH INSPECTION

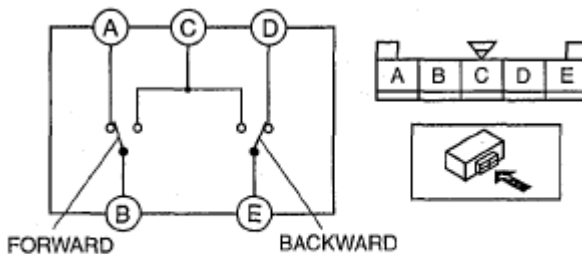
1. Disconnect the lumbar support switch connector.
2. Inspect for continuity between the lumbar support switch connector terminals.
 - If not as specified, replace the lumbar support switch.

○—○ : Continuity

Switch position	Terminal				
	A	B	C	D	E
Forward		○—○		○—○	○—○
Off	○—○			○—○	○—○
Backward	○—○		○—○		○—○

ac9uuw00001234

Fig. 19: Lumbar Support Switch Continuity Chart
 Courtesy of MAZDA MOTORS CORP.



ac9uuw00001233

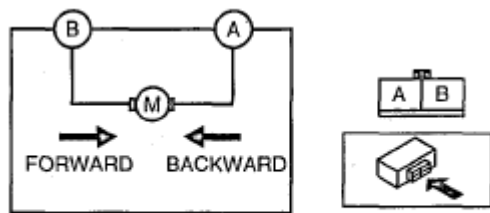
Fig. 20: Lumbar Support Switch - Circuit Diagram
 Courtesy of MAZDA MOTORS CORP.

LUMBAR SUPPORT MOTOR INSPECTION

1. Disconnect the lumbar support motor connector.
2. Connect battery positive voltage to lumbar support motor terminal A or B, then verify that the lumbar support motor operate as shown in the table.
 - If the lumbar support motor does not operate as indicated in the table, replace the Seat back frame.

MOTOR OPERATION

Motor operation	Connection	
	B+	GND
Forward	B	A
Backward	A	B



ac9urw0001199

Fig. 21: Lumbar Support Motor - Circuit Diagram
 Courtesy of MAZDA MOTORS CORP.

POWER SEAT SWITCH INSPECTION

1. Disconnect the power seat switch connector.
2. Inspect for continuity between the power seat switch connector terminals.
 - If not as specified, replace the power seat switch.

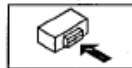
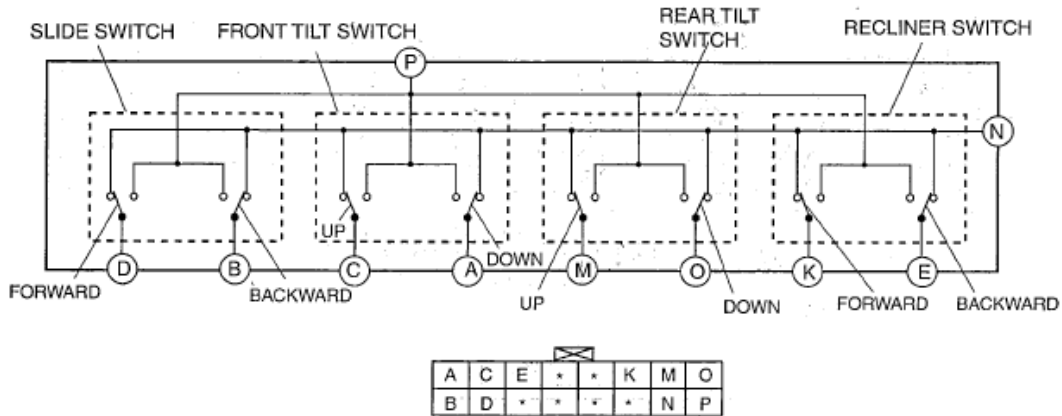
2008 Mazda CX-9 Grand Touring

2008 BODY & ACCESSORIES Seats - Mazda CX-9

Driver Seat (vehicles with position memory seat)

○—○ : Continuity

Switch position		Terminal									
		A	B	C	D	E	K	M	N	O	P
Slide switch	Forward		○		○				○		○
	Off		○		○				○		○
	Backward		○		○				○		○
Front tilt switch	Up	○		○					○		○
	Off	○		○					○		○
	Down	○		○					○		○
Rear tilt switch	Up							○	○	○	○
	Off							○	○	○	○
	Down							○	○	○	○
Recliner switch	Forward					○	○	○	○	○	○
	Off					○	○	○	○	○	○
	Backward					○	○	○	○	○	○



ac9uuw00001284

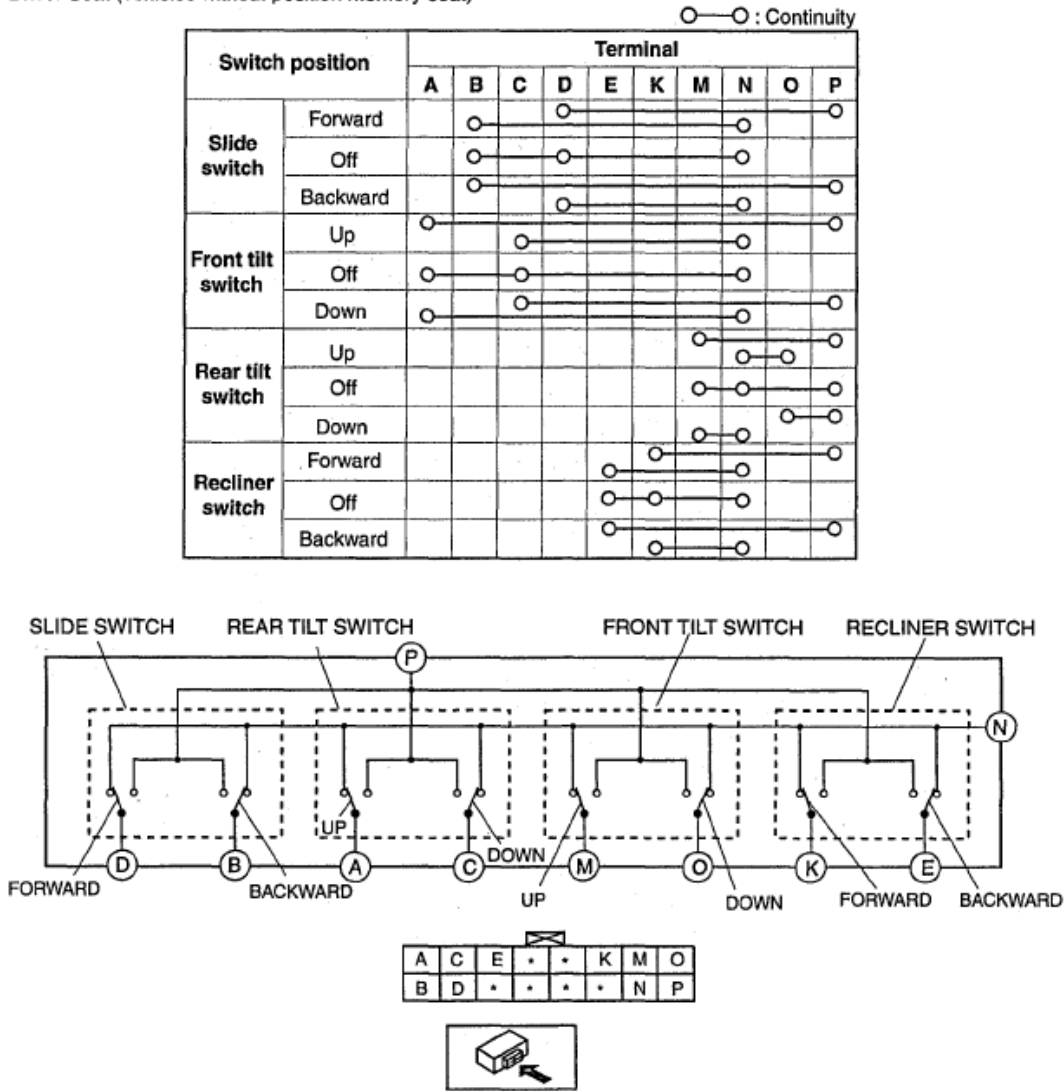
Fig. 22: Power Seat Switch (Driver Seat) - Circuit Diagram (Vehicles With Position Memory Seat)

Courtesy of MAZDA MOTORS CORP.

2008 Mazda CX-9 Grand Touring

2008 BODY & ACCESSORIES Seats - Mazda CX-9

Driver Seat (vehicles without position memory seat)



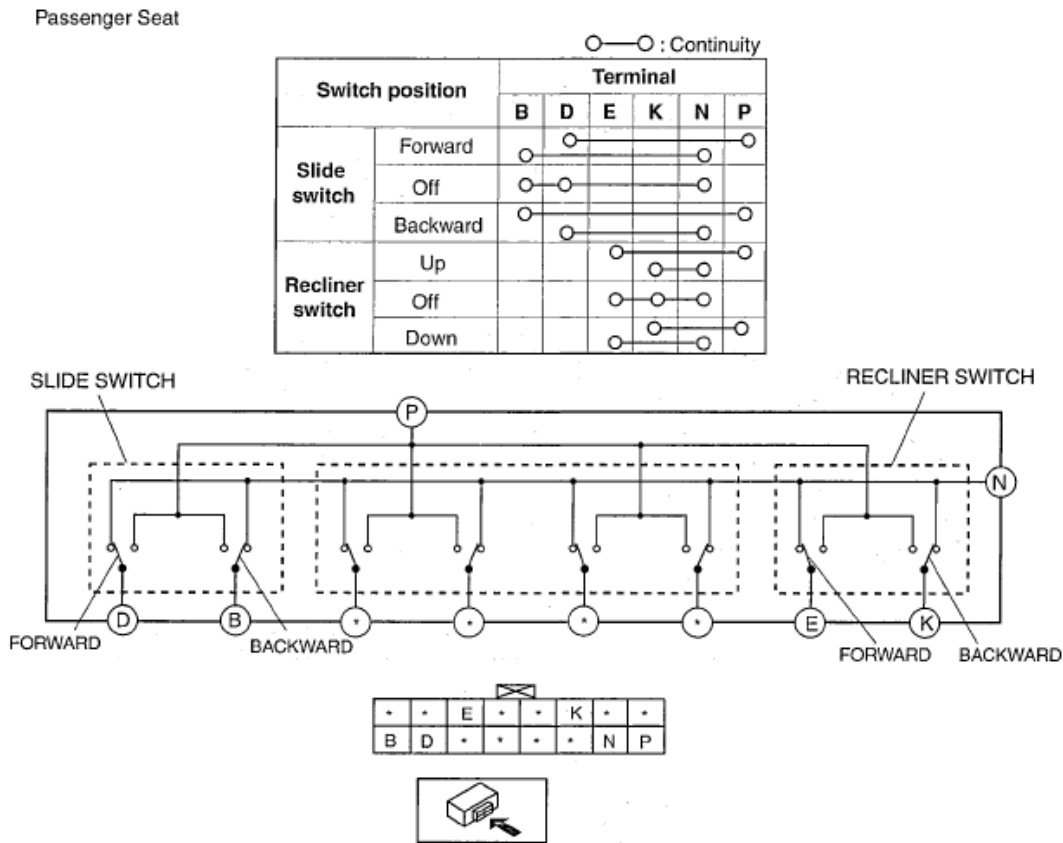
ac9uuw00001285

Fig. 23: Power Seat Switch (Driver Seat) - Circuit Diagram (Vehicles Without Position Memory Seat)

Courtesy of MAZDA MOTORS CORP.

2008 Mazda CX-9 Grand Touring

2008 BODY & ACCESSORIES Seats - Mazda CX-9



ac9utrw00001296

Fig. 24: Power Seat Switch (Passenger Seat) - Circuit Diagram
 Courtesy of MAZDA MOTORS CORP.

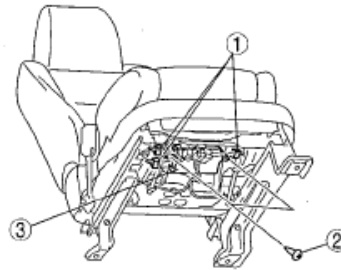
POSITION MEMORY CONTROL MODULE REMOVAL/INSTALLATION

1. Operate the power seat switch and move the seat cushion forward and upward.
2. Turn the ignition switch to the LOCK position.
3. Disconnect the negative battery cable and wait **1 min or more**.
4. Remove the driver-side front seat. (See **FRONT SEAT REMOVAL/INSTALLATION**.)
5. Remove in the order indicated in the table.
6. Install in the reverse order of removal.

2008 Mazda CX-9 Grand Touring

2008 BODY & ACCESSORIES Seats - Mazda CX-9

1	Connector
2	Screw
3	Position memory control module



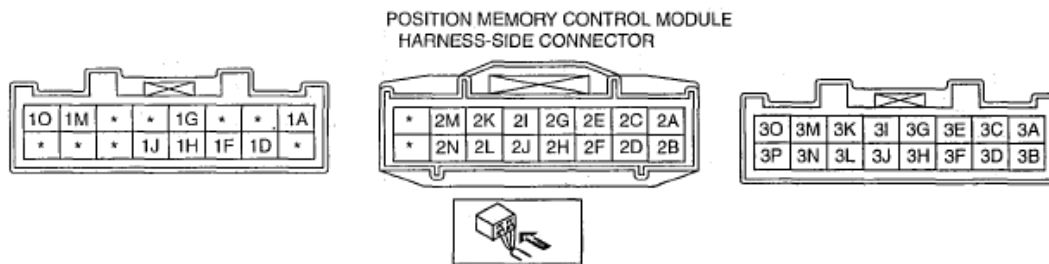
ac9uuzw00001179

Fig. 25: Identifying Position Memory Control Module And Connector
Courtesy of MAZDA MOTORS CORP.

POSITION MEMORY CONTROL MODULE INSPECTION

1. Measure the voltage at each terminal as indicated in the Terminal Voltage Tables.
 - If the voltage is not as specified in the Terminal Voltage Table (Reference), inspect the parts under "Inspection item(s)" and related wiring harnesses.
2. If the system does not work properly even though the inspection items or related wiring harnesses do not have any malfunction, replace the position memory control module.

TERMINAL VOLTAGE TABLE (REFERENCE)



ac9uuzw00002414

Fig. 26: Identifying Position Memory Control Module Connector Terminal
Courtesy of MAZDA MOTORS CORP.

VOLTAGE SPECIFICATION

Terminal	Signal name	Connected to	Measured condition	Voltage (V)	Inspection item(s)
1A	Keyless entry signal	BCM	Because this terminal is for communication, good/no good judgment by terminal voltage is not possible.		<ul style="list-style-type: none"> • BCM • Related wiring harness
1D	Vehicle speed input	Instrument cluster	Measure the waveform while driving using the oscilloscope.	High output: B+ Low output: 1.0 or less	<ul style="list-style-type: none"> • Instrument cluster • Related wiring harness

2008 Mazda CX-9 Grand Touring

2008 BODY & ACCESSORIES Seats - Mazda CX-9

1F	Door open/closed	Door switch (Driver side)	Driver-side door open: Inspect for continuity to ground. B+		<ul style="list-style-type: none"> • Door switch (Driver side) • Related wiring harness
			Driver-side door closed: Inspect for continuity to ground. 1.0 or less		
1G	IG1	Instrument cluster 10 A fuse	Ignition switch is at ON position	B+	<ul style="list-style-type: none"> • Instrument cluster 10 A fuse • Related wiring harness
			Ignition switch is at LOCK or ACC position	1.0 or less	
1H	Signal GND	Body ground	Under any condition	1.0 or less	Related wiring harness
1J	Power GND	Body ground	Under any condition	1.0 or less	Related wiring harness
1M	Power supply	ROOM 15 A fuse	Under any condition	B+	<ul style="list-style-type: none"> • ROOM 15 A fuse • Related wiring harness
1O	Power supply	P/SEAT 40 A fuse	Under any condition	B+	<ul style="list-style-type: none"> • P/SEAT 40 A fuse • Related wiring harness
2A	Slide switch input (forward)	Power seat switch	Press the slide switch to forward	1.0 or less	<ul style="list-style-type: none"> • Power seat switch • Related wiring harness
			Other	5.0	
2B	Slide switch input (backward)	Power seat switch	Press the slide switch to backward	1.0 or less	<ul style="list-style-type: none"> • Power seat switch • Related wiring harness
			Other	5.0	
2C	Front tilt switch input (up)	Power seat switch	Press the front tilt switch to up	1.0 or less	<ul style="list-style-type: none"> • Power seat switch • Related wiring harness
			Other	5.0	
2D	Front tilt switch input (down)	Power seat switch	Press the front tilt switch to down	1.0 or less	<ul style="list-style-type: none"> • Power seat switch • Related wiring harness
			Other	5.0	
2E	Rear tilt switch input (up)	Power seat switch	Press the rear tilt switch to up	1.0 or less	<ul style="list-style-type: none"> • Power seat switch • Related wiring harness
			Other	5.0	

2008 Mazda CX-9 Grand Touring

2008 BODY & ACCESSORIES Seats - Mazda CX-9

2F	Rear tilt switch input (down)	Power seat switch	Press the rear tilt switch to down	1.0 or less	<ul style="list-style-type: none"> • Power seat switch • Related wiring harness
			Other	5.0	
2G	Recliner switch input (forward)	Power seat switch	Press the recliner switch to forward	1.0 or less	<ul style="list-style-type: none"> • Power seat switch • Related wiring harness
			Other	5.0	
2H	Recliner switch input (backward)	Power seat switch	Press the recliner switch to backward	1.0 or less	<ul style="list-style-type: none"> • Power seat switch • Related wiring harness
			Other	5.0	
2I	Signal GND input	Power seat switch	Under any condition	1.0 or less	<ul style="list-style-type: none"> • Power seat switch • Related wiring harness
2J	Signal GND input	Position memory switch	Under any condition	1.0 or less	<ul style="list-style-type: none"> • Position memory switch • Related wiring harness
2K	Set switch input	Position memory switch	Press the set switch	1.0 or less	<ul style="list-style-type: none"> • Position memory switch • Related wiring harness
			Other	5.0	
2L	Memory switch 1 input	Position memory switch	Press the memory switch 1	1.0 or less	<ul style="list-style-type: none"> • Position memory switch • Related wiring harness
			Other	5.0	
2M	Memory switch 2 input	Position memory switch	Press the memory switch 2	1.0 or less	<ul style="list-style-type: none"> • Position memory switch • Related wiring harness
			Other	5.0	
2N	Memory switch 3 input	Position memory switch	Press the memory switch 3	1.0 or less	<ul style="list-style-type: none"> • Position memory switch • Related wiring harness
			Other	5.0	

2008 Mazda CX-9 Grand Touring

2008 BODY & ACCESSORIES Seats - Mazda CX-9

3A	Slide motor output (forward)	Slide motor	While slide motor is moving to forward	B+	<ul style="list-style-type: none"> • Slide motor • Related wiring harness
			Other	1.0 or less	
3B	Slide motor output (backward)	Slide motor	While slide motor is moving to backward	B+	<ul style="list-style-type: none"> • Slide motor • Related wiring harness
			Other	1.0 or less	
3C	Front tilt motor output (up)	Front tilt motor	While front tilt motor is moving to up	B+	<ul style="list-style-type: none"> • Front tilt motor • Related wiring harness
			Other	1.0 or less	
3D	Front tilt motor output (down)	Front tilt motor	While front tilt motor is moving to down	B+	<ul style="list-style-type: none"> • Front tilt motor • Related wiring harness
			Other	1.0 or less	
3E	Rear tilt motor output (up)	Rear tilt motor	While rear tilt motor is moving to up	B+	<ul style="list-style-type: none"> • Rear tilt motor • Related wiring harness
			Other	1.0 or less	
3F	Rear tilt motor output (down)	Rear tilt motor	While rear tilt motor is moving to down	B+	<ul style="list-style-type: none"> • Rear tilt motor • Related wiring harness
			Other	1.0 or less	
3G	Recliner motor output (forward)	Recliner motor	While recliner motor is moving to forward	B+	<ul style="list-style-type: none"> • Recliner motor • Related wiring harness
			Other	1.0 or less	
3H	Recliner motor output (backward)	Recliner motor	While recliner motor is moving to backward	B+	<ul style="list-style-type: none"> • Recliner motor • Related wiring harness
			Other	1.0 or less	
3I	Slide motor power supply	Slide motor	Slide motor moving	B+	<ul style="list-style-type: none"> • Slide motor • Related wiring harnesses
			Slide motor stopped	1.0 or less	
3J	Slide motor pulse	Slide motor	Measure the waveform while driving motor operation using the oscilloscope.	High output: 4.8 or more	<ul style="list-style-type: none"> • Slide motor • Related wiring harnesses
				Low output: 1.0 or less	
			Slide motor stopped	1.0 or less or 5.0	
			Front tilt motor moving	B+	<ul style="list-style-type: none"> • Front tilt

2008 Mazda CX-9 Grand Touring

2008 BODY & ACCESSORIES Seats - Mazda CX-9

3K	Front tilt motor power supply	Front tilt motor	Front tilt motor stopped	1.0 or less	<ul style="list-style-type: none"> motor • Related wiring harnesses
3L	Front tilt motor pulse	Front tilt motor	Measure the waveform while driving motor operation using the oscilloscope.	High output: 4.8 or more	<ul style="list-style-type: none"> • Front tilt motor • Related wiring harnesses
				Low output: 1.0 or less	
			Front tilt motor stopped	1.0 or less or 5.0	
3M	Rear tilt motor power supply	Rear tilt motor	Rear tilt motor moving	B+	<ul style="list-style-type: none"> • Rear tilt motor • Related wiring harnesses
			Rear tilt motor stopped	1.0 or less	
3N	Rear tilt motor pulse	Rear tilt motor	Measure the waveform while driving motor operation using the oscilloscope.	High output: 4.8 or more	<ul style="list-style-type: none"> • Rear tilt motor • Related wiring harnesses
				Low output: 1.0 or less	
			Rear tilt motor stopped	1.0 or less or 5.0	
3O	Recliner motor power supply	Recliner motor	Recliner motor moving	B+	<ul style="list-style-type: none"> • Recliner motor • Related wiring harnesses
			Recliner motor stopped	1.0 or less	
3P	Recliner motor pulse	Recliner motor	Measure the waveform while driving motor operation using the oscilloscope.	High output: 4.8 or more	<ul style="list-style-type: none"> • Recliner motor • Related wiring harnesses
				Low output: 1.0 or less	
			Recliner motor stopped	1.0 or less or 5.0	

POSITION MEMORY SWITCH INSPECTION

1. Disconnect the position memory switch connector.
2. Inspect for continuity between the power seat switch connector terminals.
 - If not as specified, replace the position memory switch.

2008 Mazda CX-9 Grand Touring

2008 BODY & ACCESSORIES Seats - Mazda CX-9

○—○ : Continuity

Switch position	Terminal				
	A	B	C	D	E
Set switch on	○—○				
Memory switch 1 on	○—○	○—○			
Memory switch 2 on	○—○			○—○	
Memory switch 3 on	○—○				○—○
Off					

ac9uuw00002415

Fig. 27: Position Memory Switch Continuity Chart
Courtesy of MAZDA MOTORS CORP.

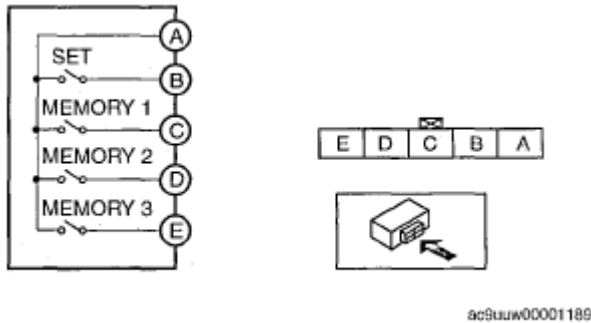
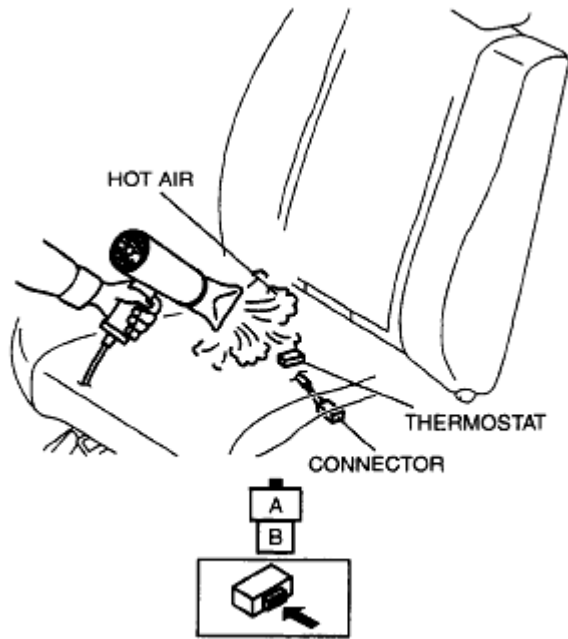


Fig. 28: Position Memory Switch - Circuit Diagram
Courtesy of MAZDA MOTORS CORP.

SEAT WARMER UNIT INSPECTION

SEAT CUSHION

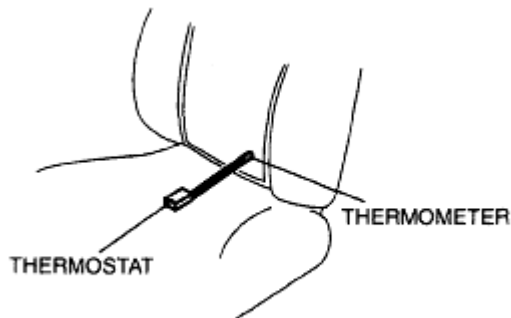
1. Remove the front seat. (See **FRONT SEAT REMOVAL/INSTALLATION.**)
2. Remove the seat cushion trim. (See **FRONT SEAT DISASSEMBLY/ASSEMBLY.**)
3. While inspecting for continuity between the connector terminals A and B, use a dryer to warm the thermostat of the seat warmer unit on seat cushion.



acxuuw0000906

Fig. 29: Checking Thermostat With Air Gun
Courtesy of MAZDA MOTORS CORP.

4. When the ohmmeter indicates that there is no continuity, turn off the dryer, then use a thermometer to measure the temperature of the thermostat.
5. Verify that the temperature is **approx. 43°C {109°F}**.



acxuuw0000907

Fig. 30: Identifying Thermostat Connector
Courtesy of MAZDA MOTORS CORP.

6. Using an ohmmeter, verify that there is continuity between the seat warmer unit connector terminals when temperature drops to **approx. 34°C {93°F}**.
 - If not as indicated in the table, replace the seat warmer unit.

2008 Mazda CX-9 Grand Touring

2008 BODY & ACCESSORIES Seats - Mazda CX-9

○—○ : Continuity

Thermostat temperature	Terminal	
	A	B
More than approx. 43 °C {109 °F}		
Less than approx. 34 °C {93 °F}	○—○	

ac9uuw0001235

Fig. 31: Thermostat Continuity Chart
Courtesy of MAZDA MOTORS CORP.

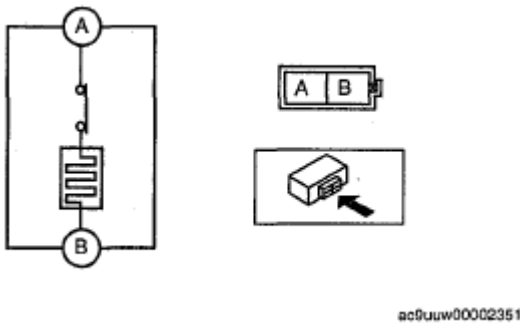


Fig. 32: Thermostat - Circuit Diagram
Courtesy of MAZDA MOTORS CORP.

SEAT BACK

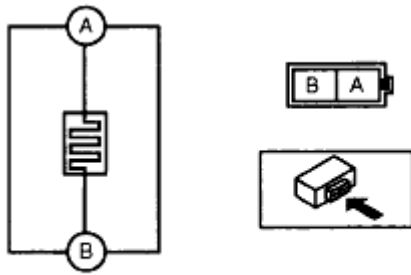
1. Remove the front seat. (See **FRONT SEAT REMOVAL/INSTALLATION.**)
2. Remove the seat back trim. (See **FRONT SEAT DISASSEMBLY/ASSEMBLY.**)
3. Verify that the continuity between terminals A and B is as indicated in the table.
 - If not as indicated in the table, replace the seat warmer unit.

○—○ : Continuity

Test condition	Terminal	
	A	B
Under any condition	○—○	

acxuuw0000911

Fig. 33: Continuity Chart
Courtesy of MAZDA MOTORS CORP.



ac9uuw00000910

Fig. 34: Seat Back - Circuit Diagram
 Courtesy of MAZDA MOTORS CORP.

SECOND-ROW SEAT REMOVAL/INSTALLATION

1. Remove the covers.

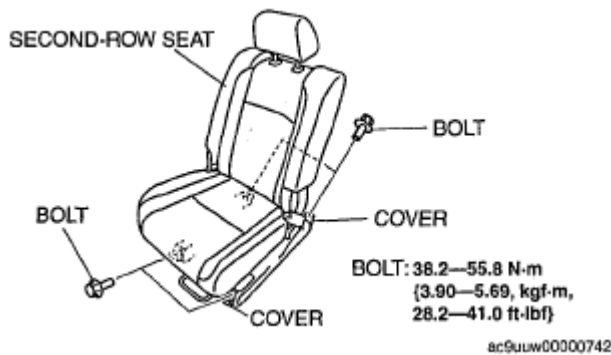


Fig. 35: Identifying Second-Row Seat, Bolt With Cover & Torque Specifications
 Courtesy of MAZDA MOTORS CORP.

2. Remove the bolts, then remove the second-row seat.
3. Install in the reverse order of removal.

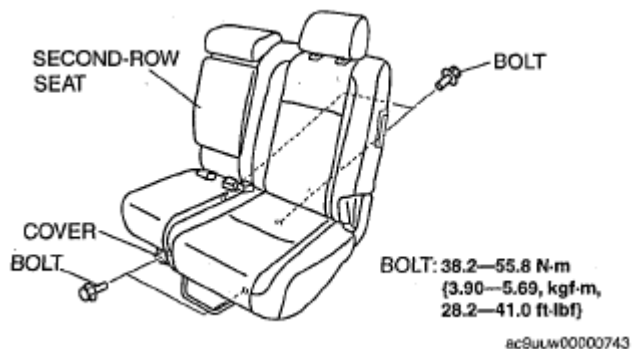
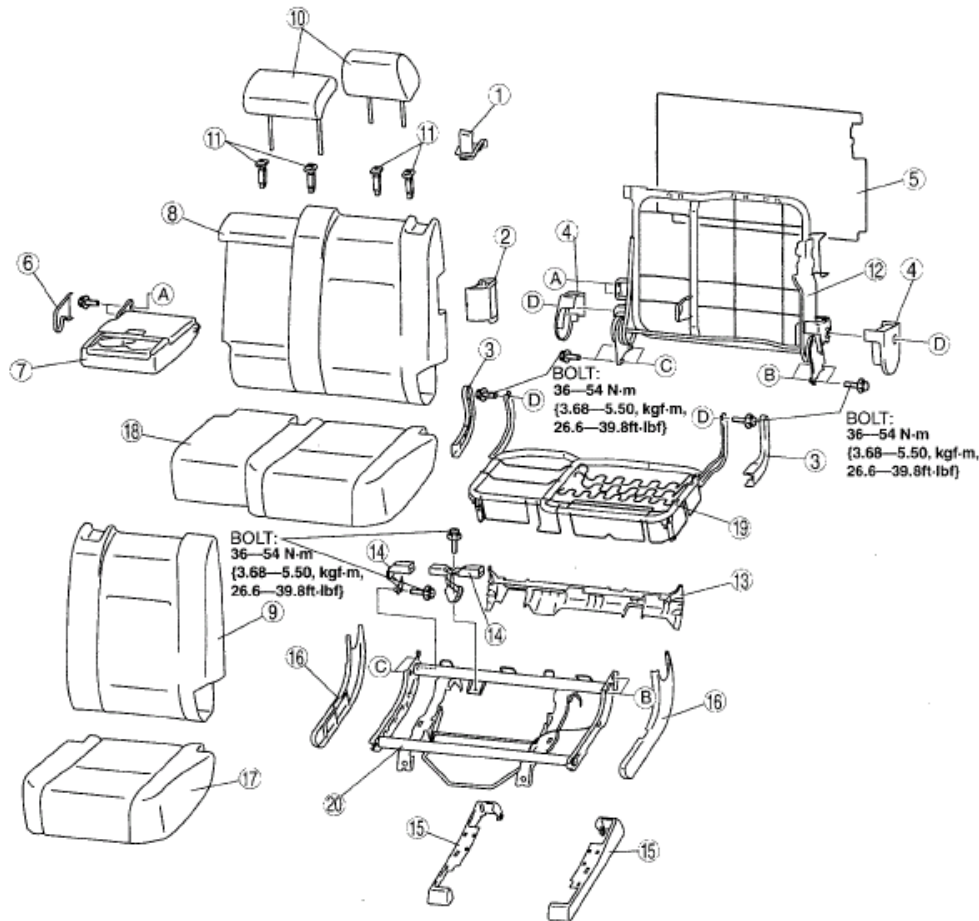


Fig. 36: Identifying Second-Row Seat, Bolt With Cover & Torque Specifications
 Courtesy of MAZDA MOTORS CORP.

SECOND-ROW SEAT DISASSEMBLY/ASSEMBLY

LH

1. Disassemble in the order indicated in the table.
2. Assemble in the reverse order of disassembly.



ac9uuw0000801

1	Recliner lever
2	Lift lever
3	Hinge cover
4	Knuckle upper cover
5	Seat back board
6	Armrest bracket
7	Armrest
8	Seat back trim
9	Seat back pad
10	Headrest

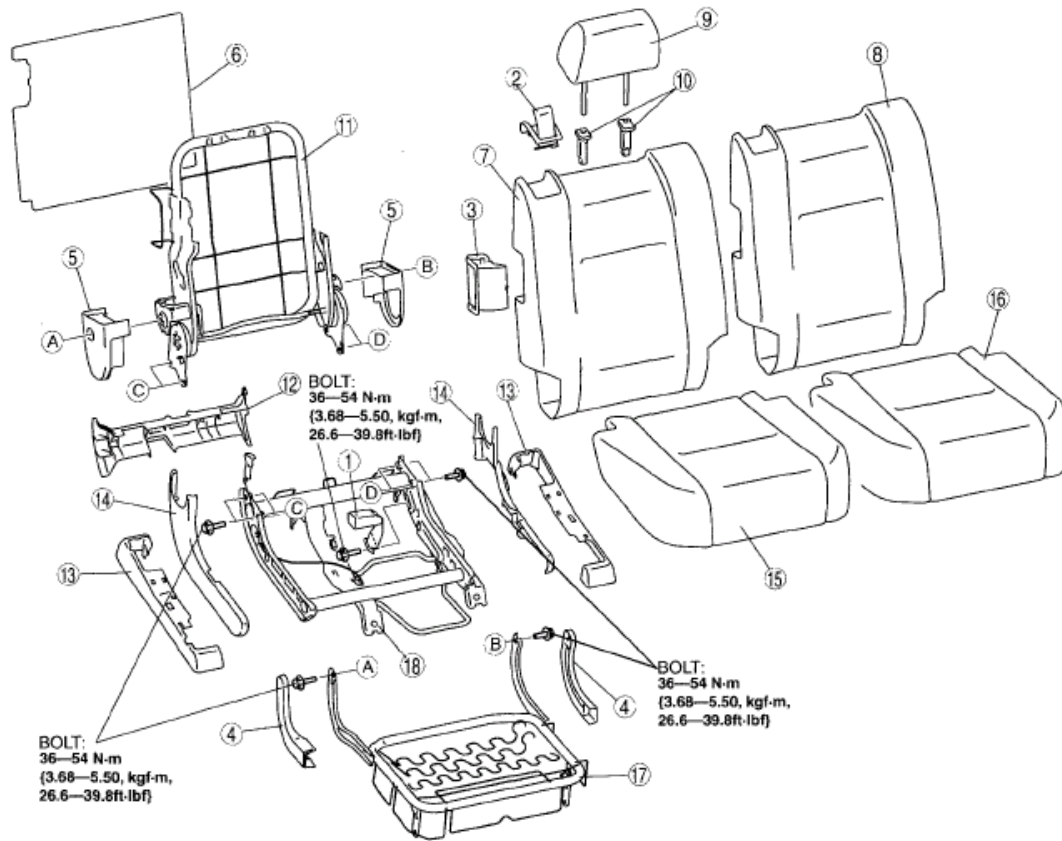
11	Pole guide
12	Seat back frame
13	Seat under bracket cover
14	Second-row buckle
15	Slide adjuster cover
16	Side cover
17	Seat cushion trim
18	Seat cushion pad
19	Seat cushion frame
20	Slide adjuster

Fig. 37: Exploded View Of Second-Row Seat (LH) & Torque Specifications
 Courtesy of MAZDA MOTORS CORP.

RH

2008 Mazda CX-9 Grand Touring

2008 BODY & ACCESSORIES Seats - Mazda CX-9



ac9uuw0000802

1	Second-row buckle
2	Recliner lever
3	Lift lever
4	Hinge cover
5	Knuckle upper cover
6	Seat back board
7	Seat back trim
9	Headrest

10	Pole guide
11	Seat back frame
12	Seat under bracket cover
13	Slide adjuster cover
14	Side cover
15	Seat cushion trim
16	Seat cushion pad
17	Seat cushion frame
18	Slide adjuster

Fig. 38: Exploded View Of Second-Row Seat (RH) & Torque Specifications
Courtesy of MAZDA MOTORS CORP.

LONG SLIDER REMOVAL/INSTALLATION

1. Disconnect the negative battery cable.
2. Remove the second-row seat. (See **SECOND-ROW SEAT REMOVAL/INSTALLATION.**)
3. Remove in the order indicated in the table.

1	Edge cover
2	Long slider cover

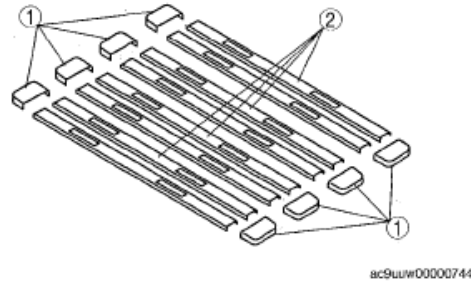


Fig. 39: Identifying Edge Cover And Long Slider Cover
 Courtesy of MAZDA MOTORS CORP.

4. Remove the following parts:
 1. Trunk box (See **TRUNK BOX REMOVAL/INSTALLATION** .)
 2. Seat side box (See **SEAT SIDE BOX REMOVAL/INSTALLATION** .)
 3. Trunk end trim (See **TRUNK END TRIM REMOVAL/INSTALLATION** .)
 4. Third-row seat (See **THIRD-ROW SEAT REMOVAL/INSTALLATION** .)
 5. Rear scuff plate inner (See **REAR SCUFF PLATE REMOVAL/INSTALLATION** .)
 6. Third-row seat belt lower anchor installation bolt (See **THIRD-ROW SEAT BELT REMOVAL/INSTALLATION** .)
 7. Trunk side trim (See **TRUNK SIDE TRIM REMOVAL/INSTALLATION** .)
5. Set the floor covering out of the way.
6. Remove in the order indicated in the table.

1	Bolt
2	Long slider

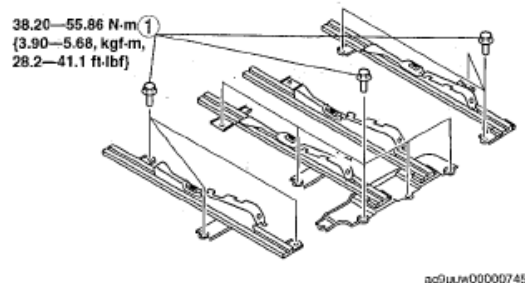


Fig. 40: Identifying Long Slider, Bolt & Torque Specifications
 Courtesy of MAZDA MOTORS CORP.

7. Install in the reverse order of removal.

THIRD-ROW SEAT REMOVAL/INSTALLATION

1. Remove the trunk box. (See **TRUNK BOX REMOVAL/INSTALLATION** .)
2. Remove the covers.
3. Remove the bolts.
4. Install in the reverse order of removal.

2008 Mazda CX-9 Grand Touring

2008 BODY & ACCESSORIES Seats - Mazda CX-9

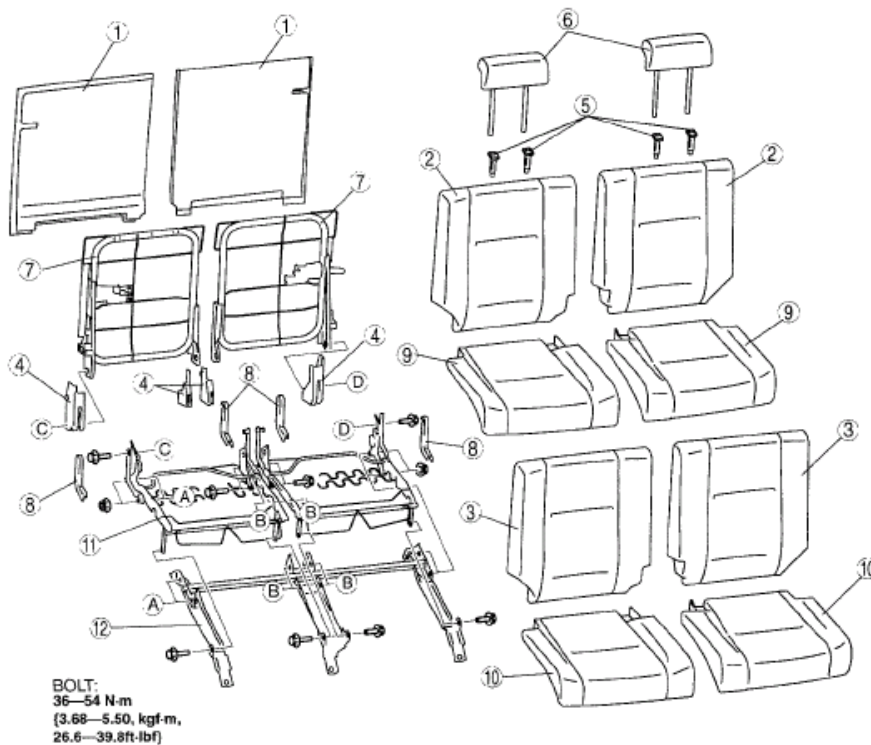


ac9uuw0000746

Fig. 41: Identifying Third-Row Seat, Bolt & Torque Specifications
 Courtesy of MAZDA MOTORS CORP.

THIRD-ROW SEAT DISASSEMBLY/ASSEMBLY

1. Disassemble in the order indicated in the table.
2. Assemble in the reverse order of disassembly.



ac9uuw00002631

1	Seat back board
2	Seat back trim
3	Seat back pad
4	Seat back frame
5	Pole guide
6	Headrest

7	Seat back frame
8	Hinge cover
9	Seat cushion trim
10	Seat cushion pad
11	Seat cushion frame
12	Seat under bracket

2008 Mazda CX-9 Grand Touring

2008 BODY & ACCESSORIES Seats - Mazda CX-9

Fig. 42: Exploded View Of Third-Row Seat & Torque Specifications
Courtesy of MAZDA MOTORS CORP.