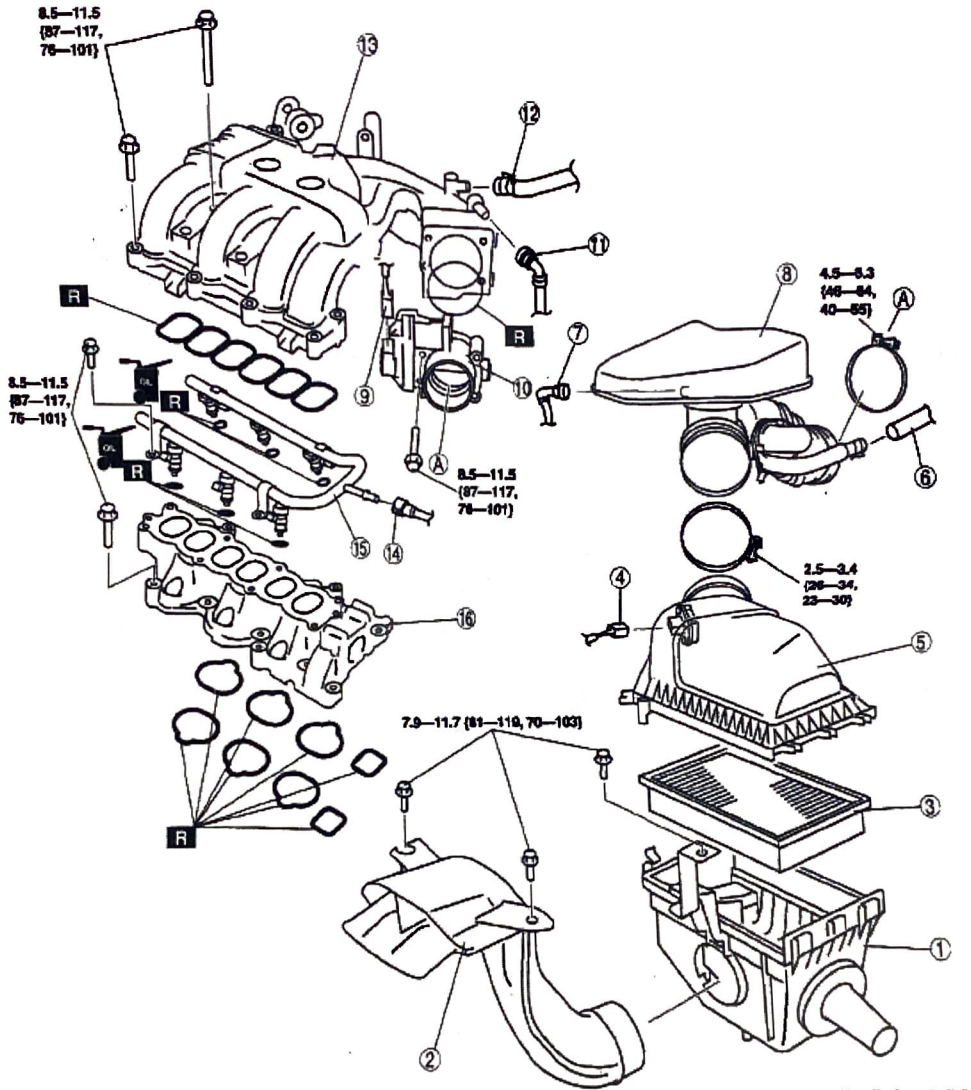


[Back To Article](#) | [Previous Graphic](#) | [Next Graphic](#) >

[Logout](#) | [Help](#)

Full-Size Version - [Click Here](#) for Printer-Ready Version

**Fig. 4: Exploded View Of Intake-Air System & Torque Specification
MAZDA MOTORS CORP.**



1	Air cleaner case
2	Fresh-air duct
3	Air cleaner element
4	MAF/IAT sensor connector
5	Air cleaner cover
6	Vacuum hose (to master back)
7	Ventilation hose (See 01-16-16 QUICK RELEASE CONNECTOR (EMISSION SYSTEM) REMOVAL/INSTALLATION [MZI-3.7].)
8	Resonance chamber

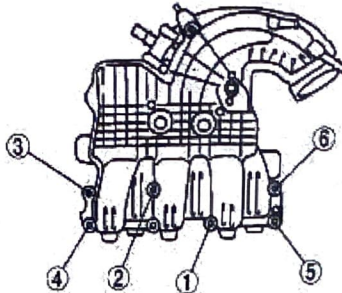
10	Throttle body
11	Vacuum hose (to purge solenoid valve) (See 01-16-16 QUICK RELEASE CONNECTOR (EMISSION SYSTEM) REMOVAL/INSTALLATION [MZI-3.7].)
12	Vacuum hose (to master back)
13	Dynamic chamber (See 01-13-6 Dynamic Chamber Installation Note.)
14	Fuel hose (See 01-16-16 QUICK RELEASE CONNECTOR (EMISSION SYSTEM) REMOVAL/INSTALLATION [MZI-3.7].)

[Back To Article](#) | [< Previous Graphic](#) | [Next Graphic >](#)

[Logout](#) | [Help](#)

Printer-Ready Version (Use Browser Print Button) - [Click Here](#) for Full-Size Version

Fig. 8: Identifying Dynamic Chamber Bolt Tightening Sequence
MAZDA MOTORS CORP.



round 1
" 2
6 ft/lb
9 ft/lb

ms90w0000418

Copyright 2021 Mitchell Repair Information Company, LLC. All Rights Reserved.

[Back To Article](#) | [< Previous Graphic](#) | [Next Graphic >](#)

Illustration: 04969541

8.5 - 11.5 N.m (87 - 117 Kgf.cm, 76 - 101 in/lb)
(6.1269 - 8.482) (6 - 8.4 ft/lb)

"How To AUTOMOTIVE"
9PZ0T0Y00SF

- * flat screwdriver
- * 8mm socket
- * 10mm socket

plugs
14 ft/lb
79 ^{in/lb} = 6.58
177 ^{in/lb} = 14.75

- * 5/8 spark plug socket
- * 2-3" ext
- * 4-5" ext
- * 6" ext
- * panel clip tool
- * hose clamp tool / pliers

TBI 10 ft/lb
120 in/lb